

## DISC GOLF GENERAL INFO

Disc Golf was created in the early 1970's by 'Steady Ed' Headricks in California. The first course in Ohio was Medina in the mid-1980's. Now there are over 160 courses in Ohio and growing.

This course at Sabo Park has been created by the Village of Brewster Parks Department and officially opened in 2005. It is a 9 hole, par 36 disc golf course. It is part of the Hakker and Hyzer Disc Golf Trail. All organized events must be approved by the Village of Brewster Parks Department at least two weeks in advance of the event.

This course is part of the Stark County Disc Golf Association. Players can use any disc recreationally, but official PDGA approved discs can be purchased locally at Quonset Hut in Canton, sporting goods stores like Dick's and Play-It-Again Sports. They are also available on-line from several sources.

Everyone needs to remember that we are guests in this park. If we abuse that right, the course can be pulled.

DO NOT DAMAGE OR HARM PARK PROPERTY, FOLIAGE, OR WILDLIFE!  
DO NOT LITTER... IF YOU CARRY IT IN, CARRY IT OUT!  
RESPECT OTHER PARK USERS THAT MAY BE ON THE COURSE!

For more information about disc golf, you can go to the following websites:

National: PDGA (Professional Disc Golf Association) at 'pdga.com'  
Regional and Local: Disc Golf Scene at 'discgolfszene.com'  
Northeast Ohio Disc Golf Alliance  
Stark County Disc Golf Association  
Brewster: Massillon (Lincoln Park), Canton (Arboretum/Spiker, Veterans Memorial (Plain Twp), Faircrest Park, Malone University), Dover (Deis Hill Park), Louisville (Wildwood Park), Wooster (Freslander Park), Alliance (Veterans Park), Green (Boettler Park), New Franklin (Portage Lakes State Park)

## DISC GOLF RULES

### FOR RECREATIONAL PLAY

**GENERAL:**..... Disc Golf is played like ball golf using a flying disc (frisbee). One point is counted each time the disc is thrown and when a penalty is incurred. The object is to acquire the lowest score.

**TEE THROW:**..... A tee throw must be completed within or behind the designated tee area. (\*DON'T THROW UNTIL THE PLAYERS IN FRONT OF YOU ARE OUT OF RANGE AND THE FAIRWAYS CLEAR OF PEOPLE !)

**LIE:**..... The spot where the previous throw lands... Mark that spot with a mini directly towards the hole or play from behind your thrown disc.(do not flip your disc).

**THROWING ORDER:**..... After teeing off, the player whose disc is farthest from the hole always throws next. The player with the least amount of throws on the previous hole is the first to tee-off on the next tee.

**FAIRWAY THROWS:**..... Fairway throws must be made with the foot closest to the hole behind the lie (within one foot). The other foot may be no closer to the hole than the lie. A run-up and a normal follow-through, after the release is allowed.

**DOG-LEG:**..... A dog-leg is one or more designated obstacles in the fairway that must be passed AS INDICATED BY ARROWS. Until the dogleg is passed, the closest foot to the dog-leg must be behind the lie when the disc is released.

**COMPLETION OF HOLE:** A disc that comes to rest, supported by the basket or chains constitutes a completion of the hole. (Exception: A disc that rests on top of the basket must be putted into the basket.)

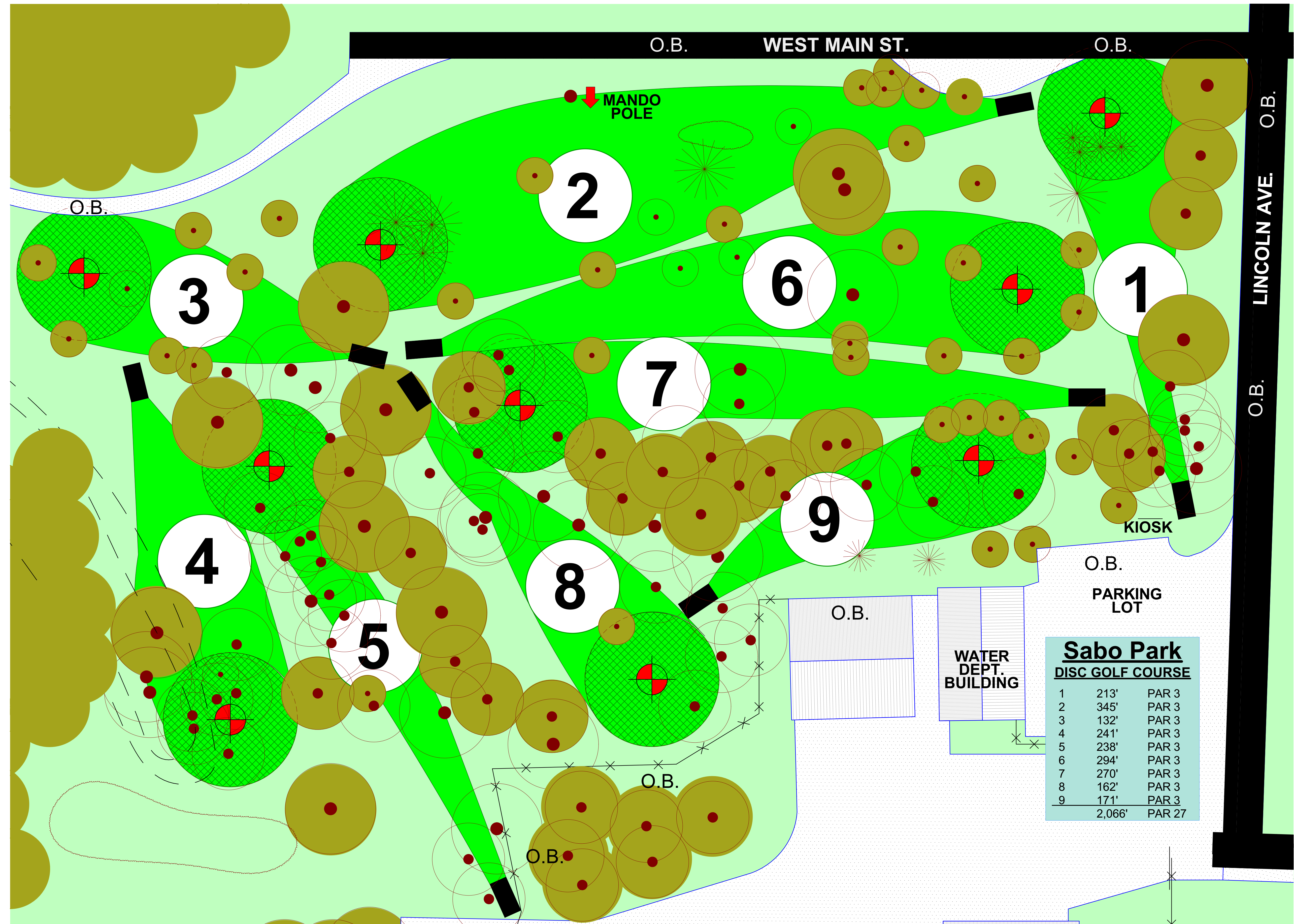
**UNPLAYABLE LIE:**..... Any disc that comes to rest more than two meters (6'-6") above the ground is considered an unplayable lie. The disc must be thrown from the new lie on the ground, directly below the unplayable lie. (RELOCATE TO AVOID DAMAGE TO PLANTS!). A one stroke penalty will be assessed for an unplayable lie.

**OUT-OF-BOUNDS:**..... A disc is out-of-bounds (OB) if the OB is visible between the disc and the OB. (Completely surrounded by water / pavement). A throw that lands OB, must be played from a point three feet in bounds from where the disc went OB. Permanent water hazards and public roads are always OB. A one stroke penalty will be assessed for each OB.

**COURSE COURTESY:**..... Do not litter, pick-up the trash... Do not talk or distract others while they are playing... DO NOT DAMAGE PARK PROPERTY, ESPECIALLY PLANTS... Do not walk beyond the player who farthest from the hole until it is your turn... Do not stand in the sight line of someone who is putting... We are guests in the park and need to act accordingly.

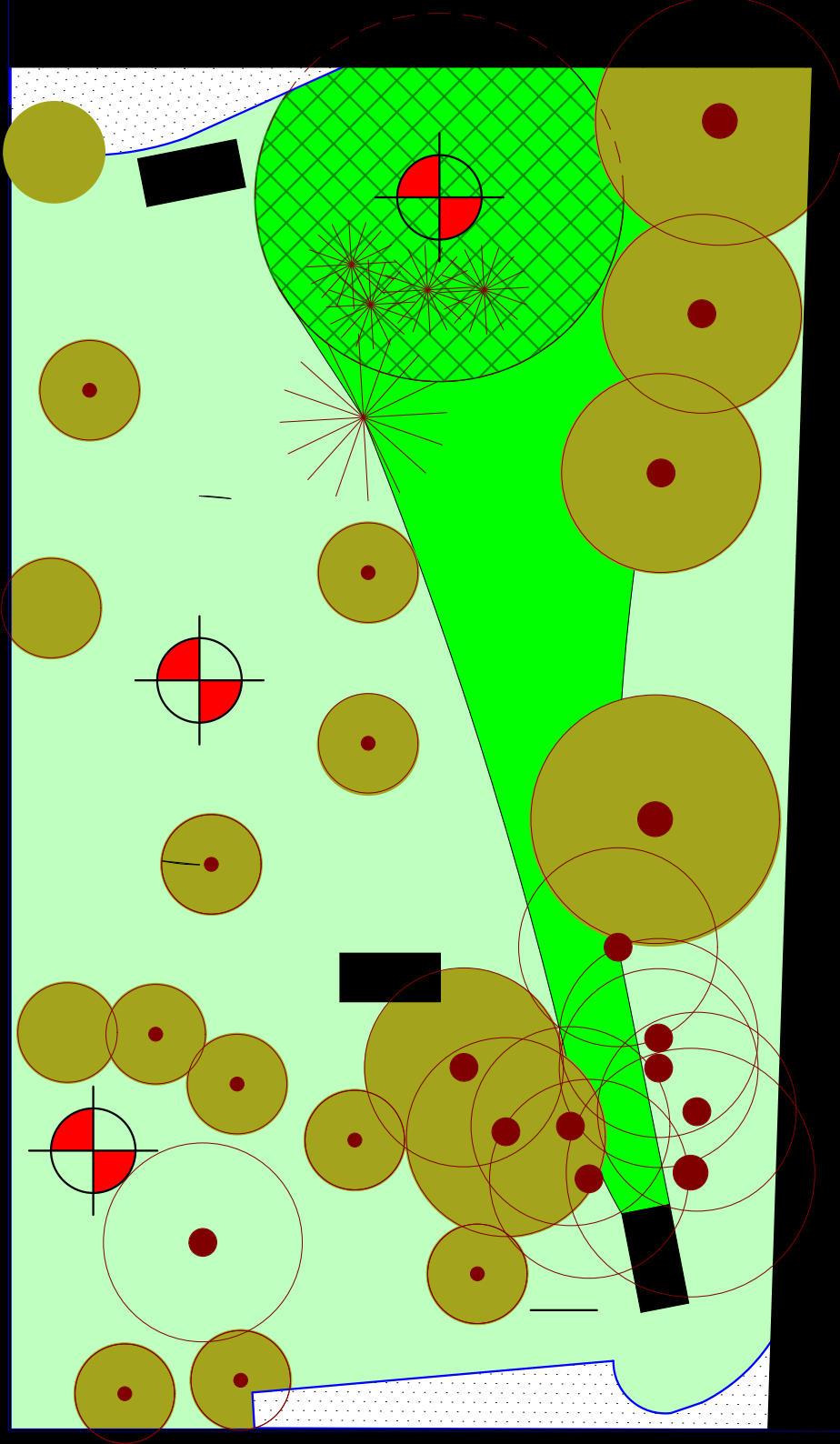
THE PERSON WHO HAS THE MOST FUN WINS!

The full competition rules are available on-line at the PDGA website at 'pdga.com'



# 1

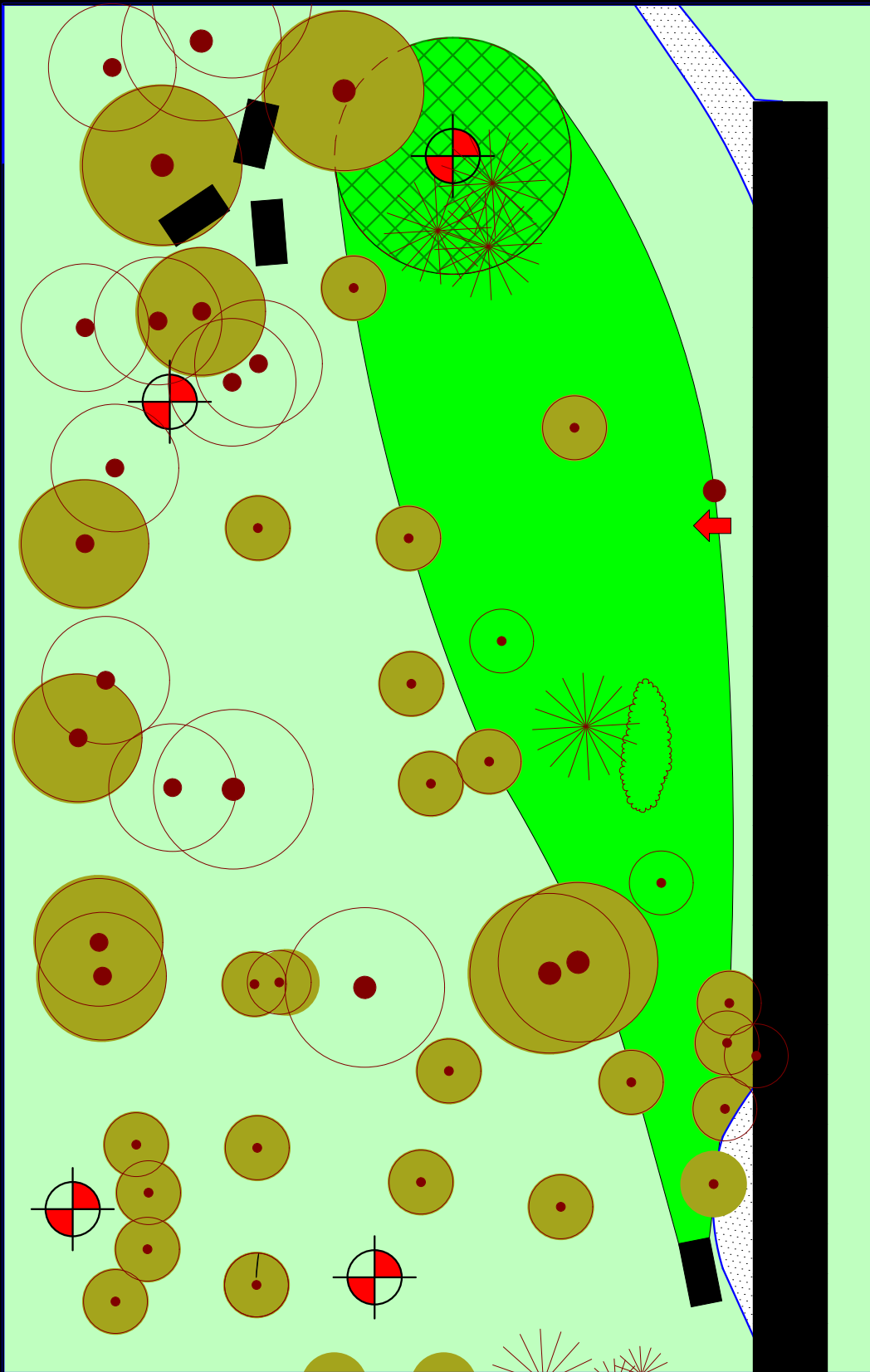
213'  
par 3



Sabo Park  
Village of  
Brewster Park  
Department

2

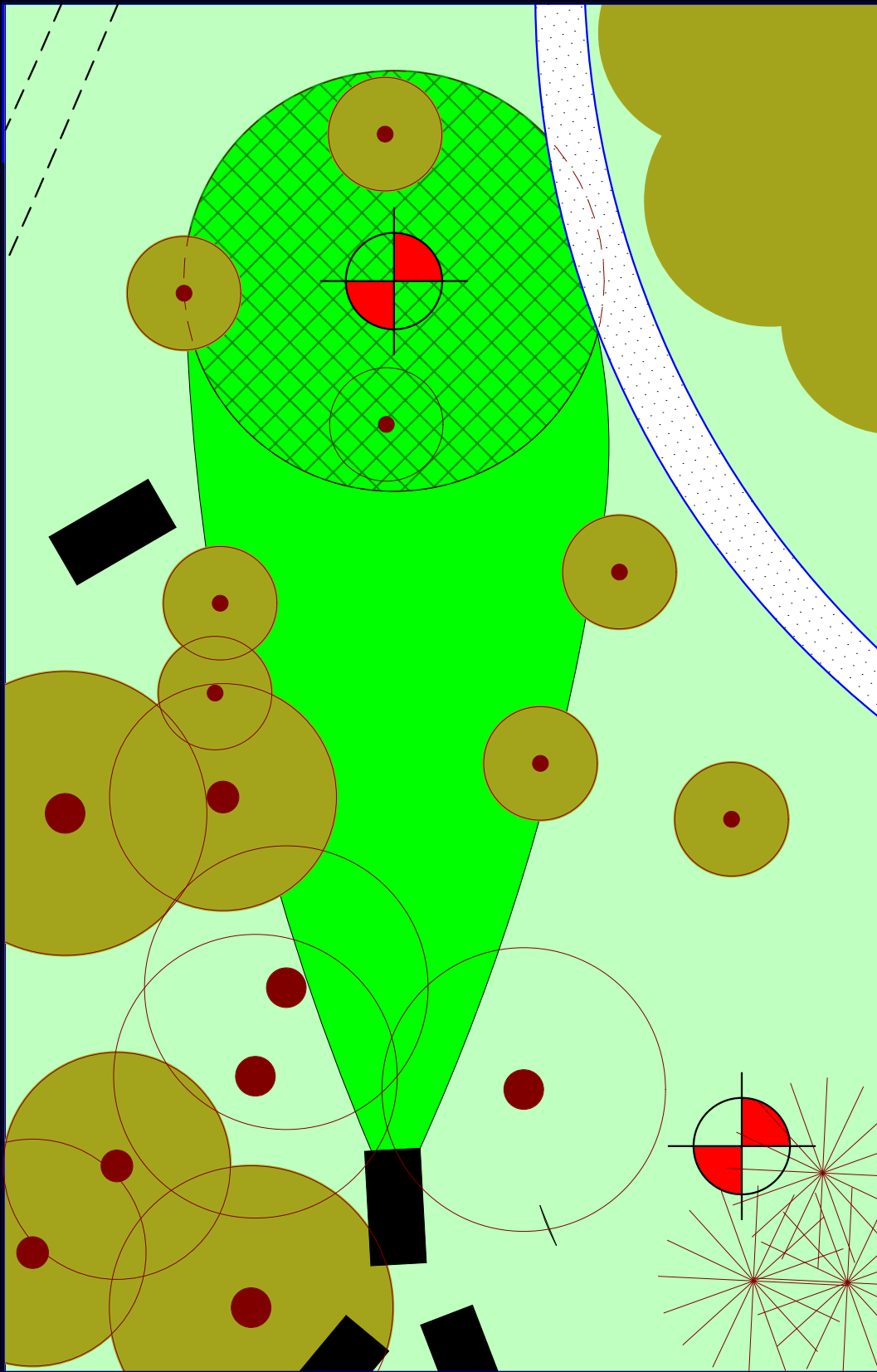
345'  
par 3



Sabo Park  
Village of  
Brewster Park  
Department

# 3

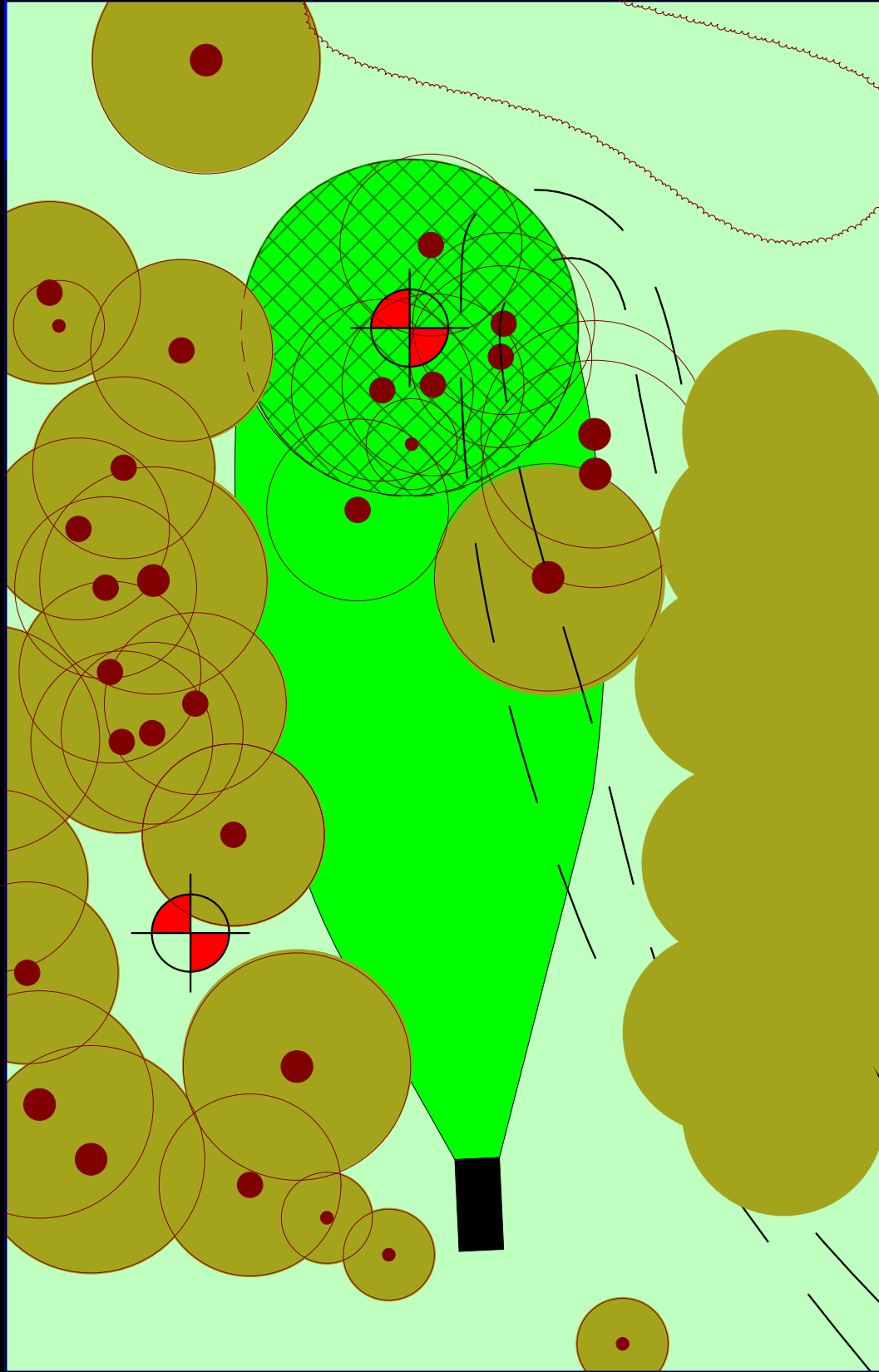
# 132' par 3



Sabo Park  
Village of  
Brewster Park  
Department

4

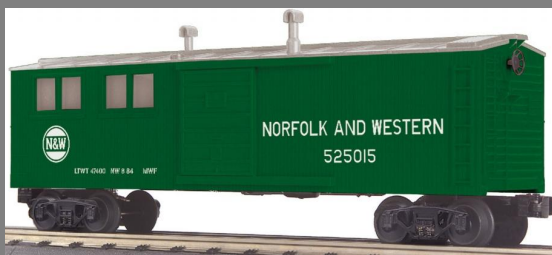
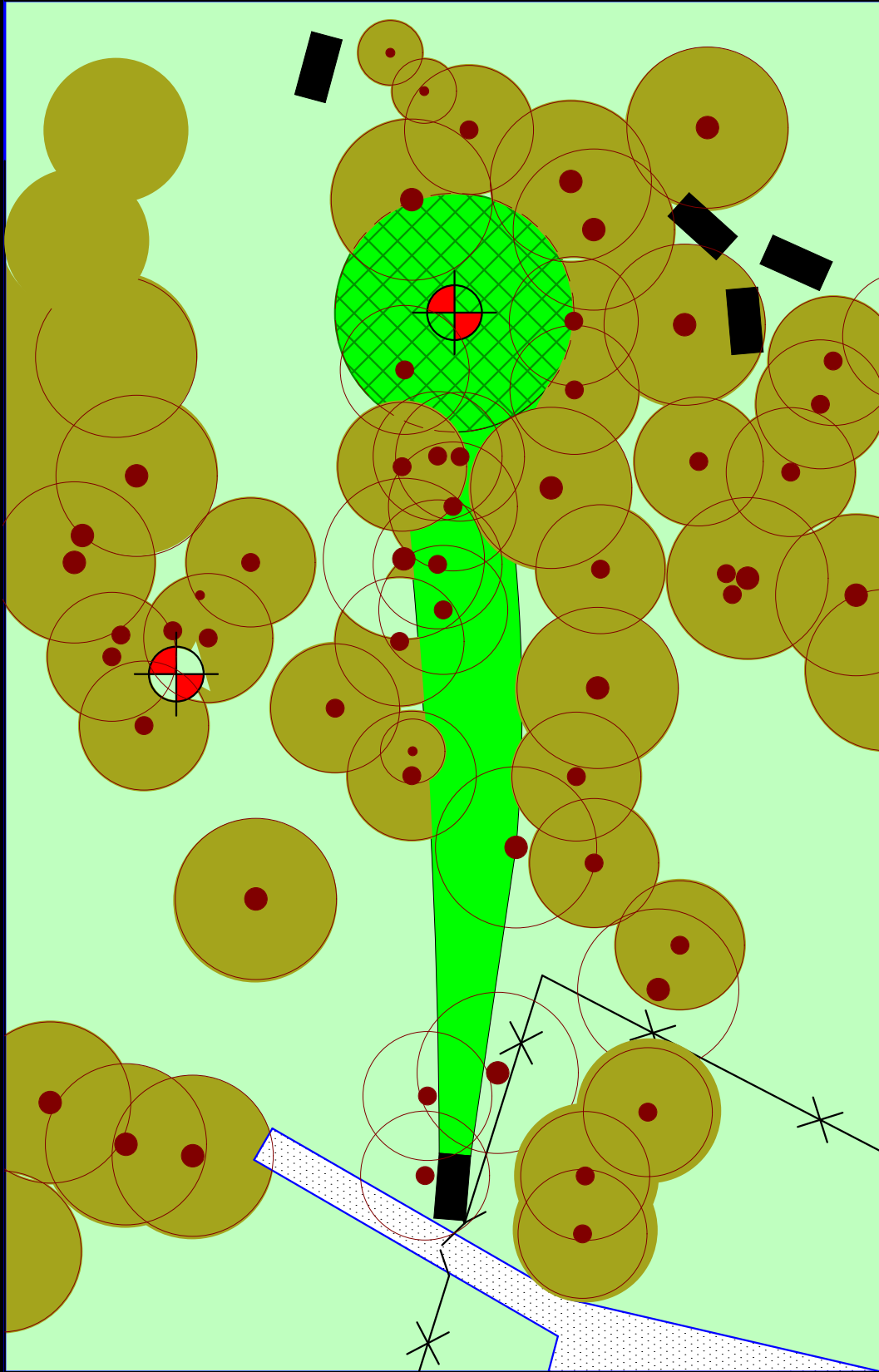
241'  
par 3



Sabo Park  
Village of  
Brewster Park  
Department

5

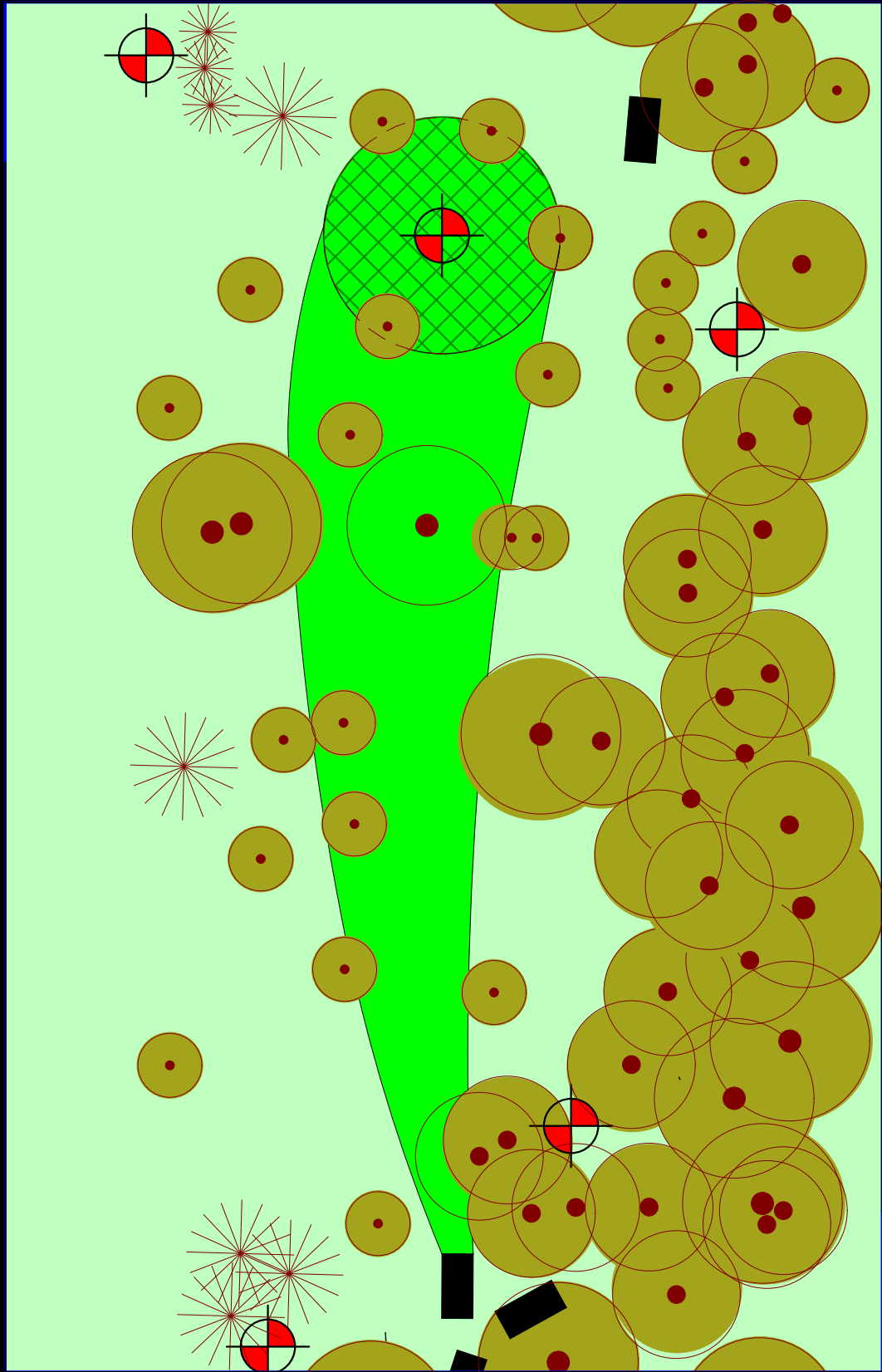
238'  
par 3



Sabo Park  
Village of  
Brewster Park  
Department

6

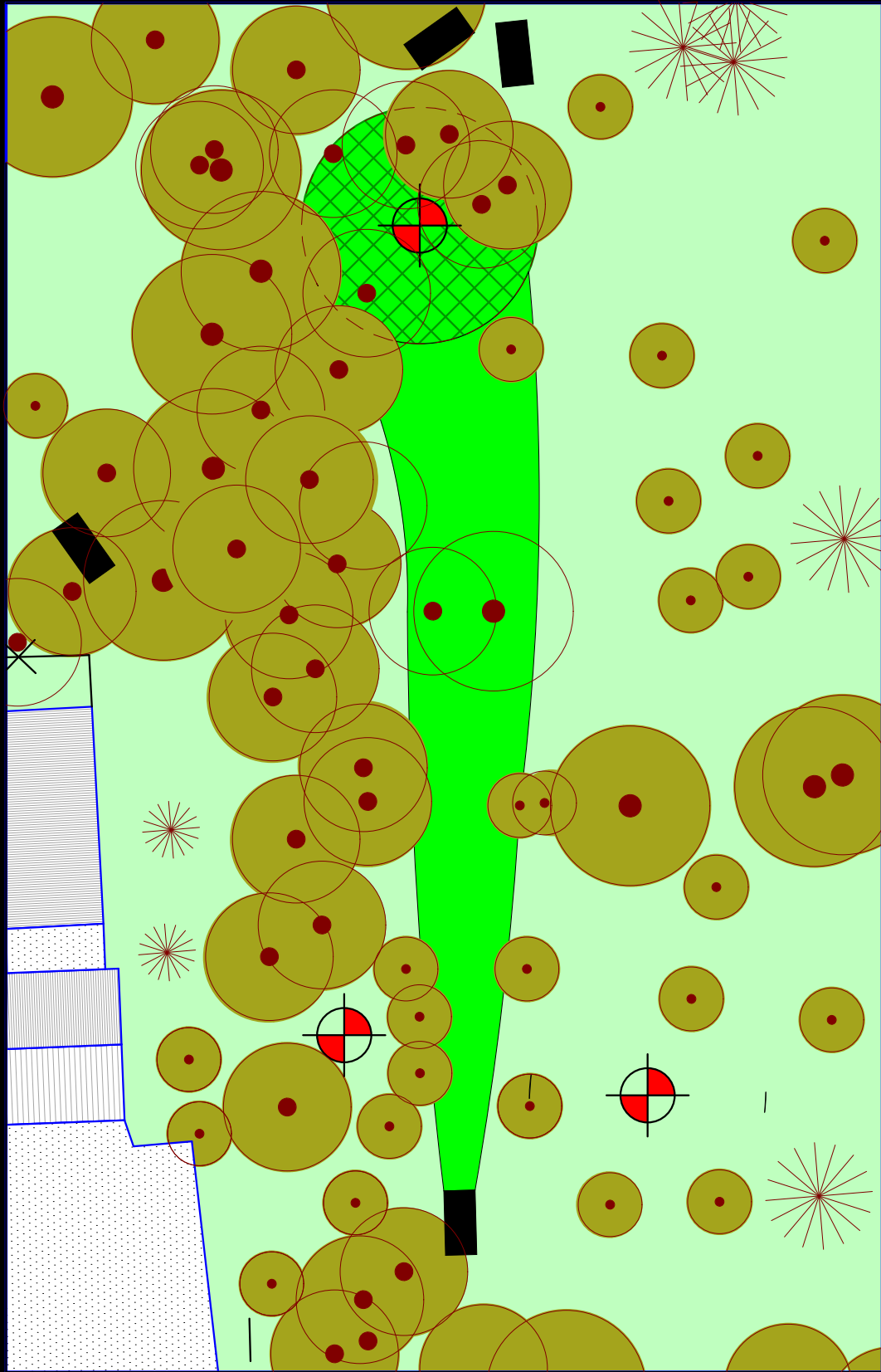
294'  
par 3



Sabo Park  
Village of  
Brewster Park  
Department

# 7

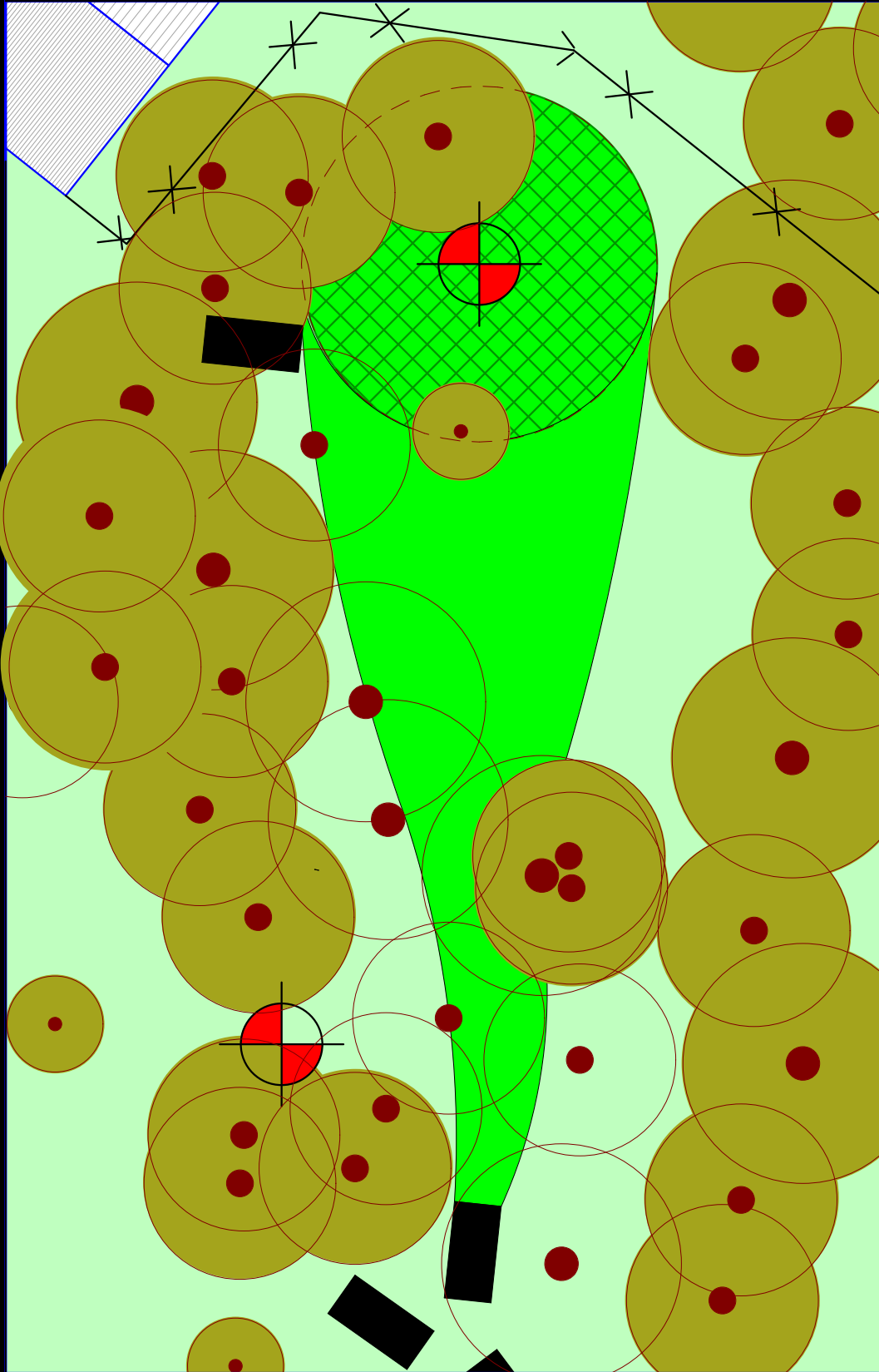
270'  
par 3



Sabo Park  
Village of  
Brewster Park  
Department

8

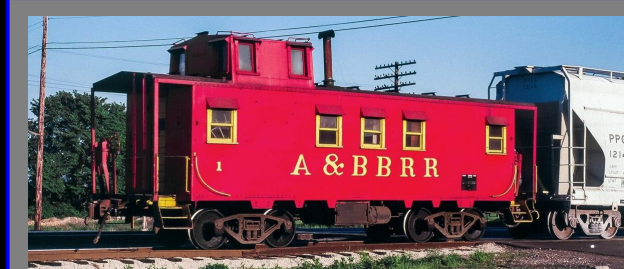
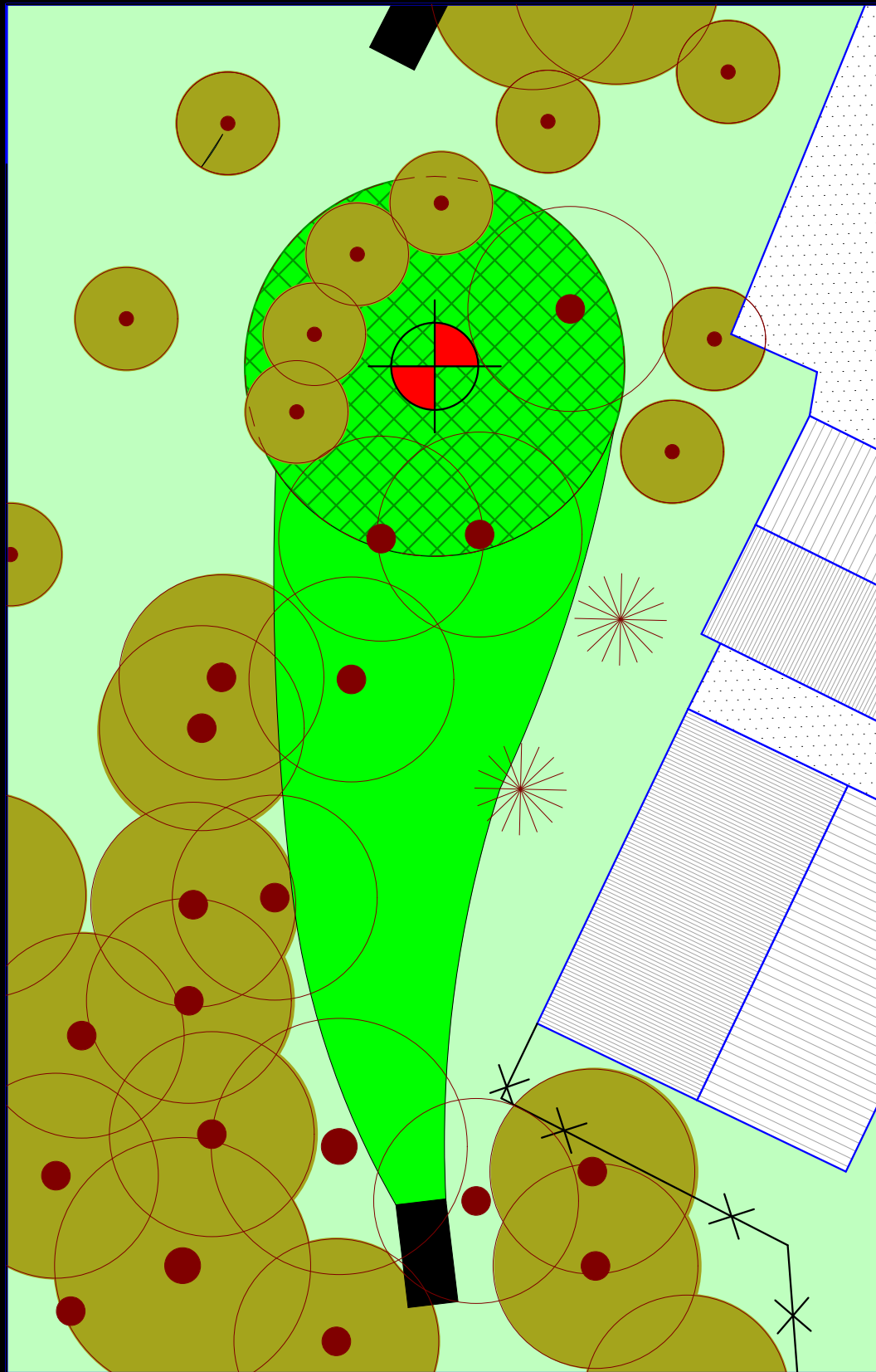
162'  
par 3



Sabo Park  
Village of  
Brewster Park  
Department

9

171'  
par 3



Sabo Park  
Village of  
Brewster Park  
Department